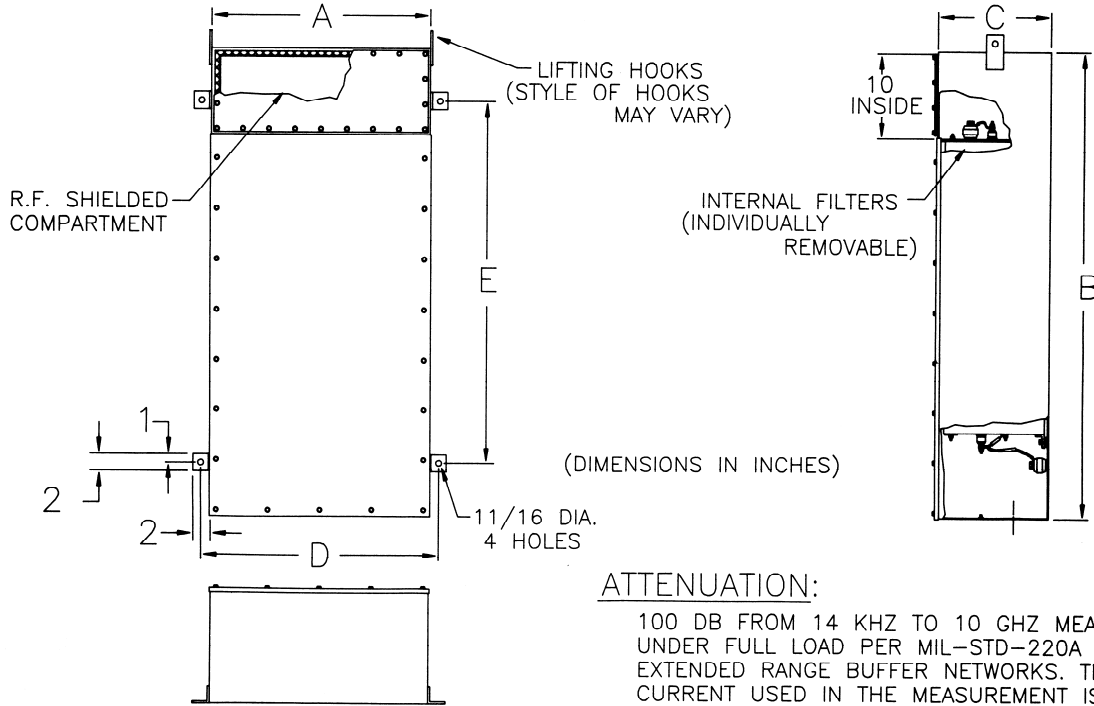




UL Listed Facility Filters Per UL Safety Specification 1283



ATTENUATION:

100 DB FROM 14 KHZ TO 10 GHZ MEASURED UNDER FULL LOAD PER MIL-STD-220A USING EXTENDED RANGE BUFFER NETWORKS. THE CURRENT USED IN THE MEASUREMENT IS EQUAL TO THE MAXIMUM RATING OF THE FILTER.

NOTES:

1. Filters are listed per UL specification #1283
2. Temperature Range: Operating -55°C to +85°C
3. Enclosures are made from cold rolled steel with continuously welded seams
4. Filter ground path connecting surfaces shall be tin plated or stainless steel
5. Conduit hubs or clearance holes may be provided if specified when ordering
6. Each phase filter is individually removable
7. Internal filters are filed with a non-flammable impregnant and hemetically sealed
8. Legs for floor mounting may be provided if specified when ordering
9. Filters for 300AMP and up have 6" x 2" mounting U-Channel

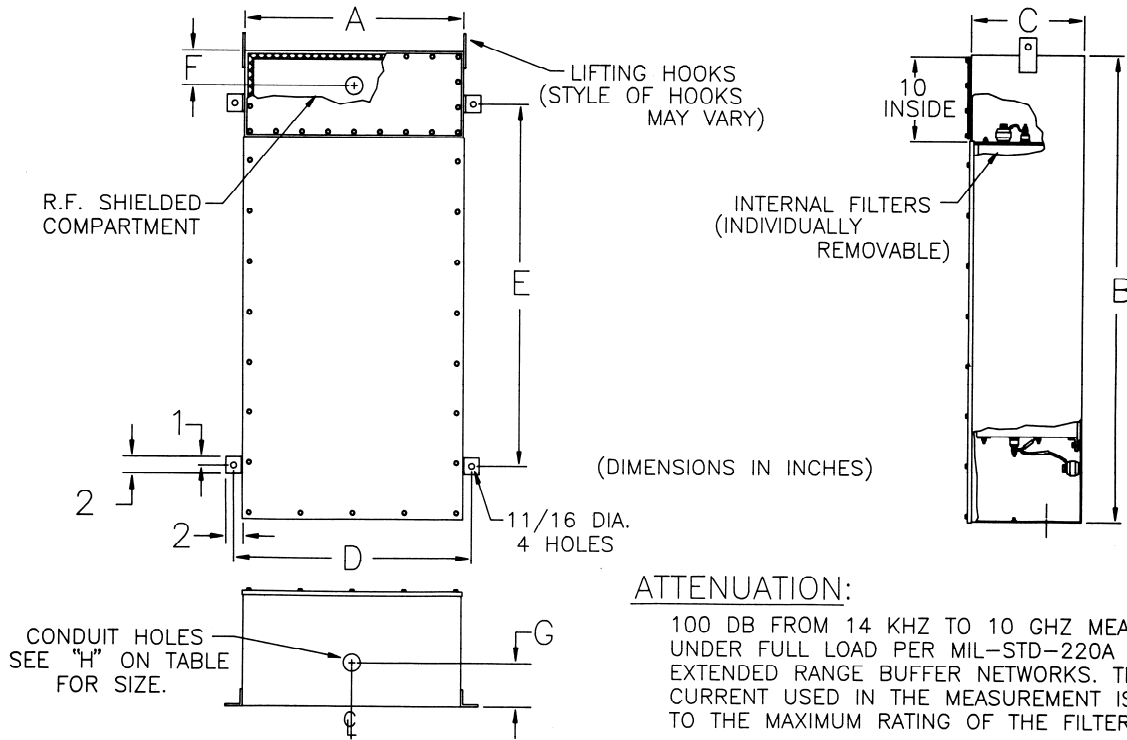
Part Number	Current Rating (AMP)	Voltage Rating		Frequency Rating (Hz)	Dimensions (INCHES)					Weight Approx. (LBS)
		VAC	VDC		A±.060	B±.060	C±.060	D±.060	E±.060	
FCULX-4 X 30E2	4 x 30	277	600	60	28	38	6	32	26	220
FCULX-4 X 60E2	4 x 60	277	600	60	28	41	8	32	29	315
FCULX-4 X 100E2	4 x 100	277	600	60	38	48	10	40	36	520
FCULX-4 X 225E2	4 x 225	277	600	60	28	54	16	32	42	750
FCULX-4 X 250E2	4 x 250	277	600	60	28	54	16	32	42	750
FCULX-4 X 300E2	4 x 300	277	600	60	60	72	16	66	44	850
FCULX-4 X 400E2	4 x 400	277	600	60	60	72	16	66	44	975
FCULX-4 X 500E2	4 x 500	277	600	60	60	72	16	66	44	1075
FCULX-4 X 600E2	4 x 600	277	600	60	45	72	34	66	44	1600
FCULX-4 X 800E2	4 x 800	277	600	60	60	72	34	66	44	2400
FCULX-4 X 1000E2	4 x 1000	277	600	60	60	72	34	66	44	2500
FCULX-4 X 1200E2	4 x 1200	277	600	60	72	72	34	78	44	2750
FCULX-4 X 1500E2	4 x 1500	277	600	60	72	72	34	78	44	2900

*All Filter Cabinets are also available in 2 line and 3 line configuration





UL Listed Facility Filters Per UL Safety Specification 1283



PART NUMBER	CURRENT (AMPS)	FREQ (HZ)	VOLTAGE RATING		DIMENSIONS (INCHES)								WEIGHT APPROX.(lbs.)
			VAC	VDC	A	B	C	D	E	F	G	H	
FCCO-XUL-(2) 2x5	4x5	60	277	600	14.00	40.00	18.00	16.25	28.0	3.00	2.0	.88	210
FCCO-XUL-(2) 2x5-400 HZ	4x5	400	277	600	14.00	40.00	18.00	16.25	28.0	3.00	2.0	.88	210
FCCO-XUL-600 VAC-(2)	4x5	60	600	1,000	14.00	40.00	18.00	16.25	28.0	3.00	2.0	.88	210
FCCO-XUL-600VAC-(2)	4x5	400	600	1,000	14.00	40.00	18.00	16.25	28.0	3.00	2.0	.88	210
FCCO-XUL-(2) 2x30	4x30	60	277	600	14.00	52.00	18.00	16.25	40.0	3.00	2.0	1.38	315
FCCO-XUL-(2) 2x30-400	4x30	400	277	600	14.00	52.00	18.00	16.25	40.0	3.00	2.0	1.38	315
FCCO-XUL-600VAC-(2)	4x30	60	600	1,000	14.00	52.00	18.00	16.25	40.0	3.00	2.0	1.38	315
FCCO-XUL-600 VAC-(2)	4x30	400	600	1,000	14.00	52.00	18.00	16.25	40.0	3.00	2.0	1.38	315
FCCO-XUL-4x100	4x100	60	277	600	25.00	65.00	15.00	27.25	53.0	4.00	5.0	2.00	570
FCCO-XUL-4x100-400 HZ	4x100	400	277	600	25.00	65.00	15.00	27.25	53.0	4.00	5.0	2.00	570
FCCO-XUL-600VAC-4x100	4x100	60	600	1,000	25.00	65.00	15.00	27.25	53.0	4.00	5.0	2.00	570
FCCO-XUL-600 VAC-4x1	4x100	400	600	1,000	25.00	65.00	15.00	27.25	53.0	4.00	5.0	2.00	570
FCCO-XUL-4x225	4x225	60	277	600	30.00	65.00	27.00	32.25	53.0	6.00	5.0	3.00	1,000
FCCO-XUL-4x225-400 HZ	4x225	400	277	600	30.00	65.00	27.00	32.25	53.0	6.00	5.0	3.00	1,000
FCCO-XUL-600 VAC-4x225	4x225	60	600	1,000	30.00	65.00	27.00	32.25	53.0	6.00	5.0	3.00	1,000
FCCO-XUL-600VAC-	4x225	400	600	1,000	30.00	65.00	27.00	32.25	53.0	6.00	5.0	3.00	1,000

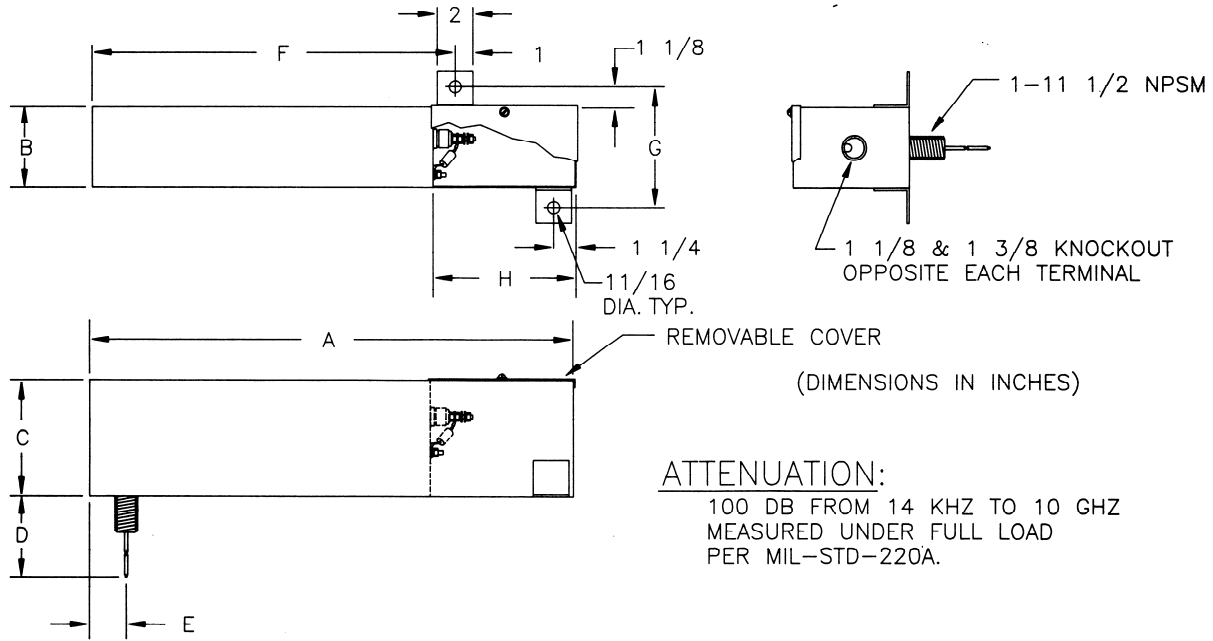
NOTES:

1. Individual, UL listed, replacement filters are available
Example: "FCCO-XUL-4x100-400HZ" all dimensions are the same as 60HZ units
2. Operating temperature range: -55°C to + 85°C
3. 100 & 225 AMP assemblies are also available for 3 phase 3 wire systems





UL Listed Facility Filters Per UL Safety Specification 1283



PART NO	CURRENT RATING (AMP)	VOLTAGE RATING (VAC)	FREQ RATING (HZ)	WIRE SIZE	DIMENSIONS (INCHES)							
					A	B	C	D	E	F	G	H
FC-962	2 x 5	277	0-60	#10	24	7	4	36	1.75	19.25	9.25	6
FC-962A	2 x 5	277	0-400	#10	24	7	4	36	1.75	19.25	9.25	6
FC-1407	2 x 5	600	0-60	#10	24	8	7	36	1.75	19.25	10.25	6
FC-1407A	2 x 5	600	0-400	#10	24	8	7	36	1.75	19.25	10.25	6
FC-943	2 x 30	277	0-60	#10	24	7	7	36	1.75	19.25	9.25	6
FC-943A	2 x 30	277	0-400	#10	24	7	7	36	1.75	19.25	9.25	6
FC-1387	2 x 30	600	0-60	#10	24	8	7	36	1.75	19.25	10.25	6
FC-1387A	2 x 30	600	0-400	#10	24	8	7	36	1.75	19.25	10.25	6
FC-944	100	277	0-60	#2	34	4.50	6.50	36	2	26.25	6.75	9
FC-944A	100	277	0-400	#2	34	4.50	6.50	36	2	26.25	6.75	9
FC-1197	100	600	0-60	#2	34	8	6.50	36	2	26.25	10.25	9
IEC-1197A	100	600	0-400	#2	34	8	6.50	36	2	26.25	10.25	9
FC-945	225	277	0-60	250 MCM	41	8	8	36	2	27.25	10.25	15
FC-945A	225	277	0-400	250 MCM	41	8	8	36	2	27.25	10.25	15
FC-1198	225	600	0-60	250 MCM	41	8	8	36	2	27.25	10.25	15
FC-1198A	225	600	0-400	250 MCM	41	8	8	36	2	27.25	10.25	15

1. Each field wiring terminal and ground stud is provided with a set screw type lug
2. Each circuit is provided with discharge resistors

**FIL-COIL CO. INC. - THE FIRST
COMPANY TO BE LISTED AS MANUFACTURER OF
FACILITY FILTERS PER UL SAFETY SPECIFICATION #1283**

